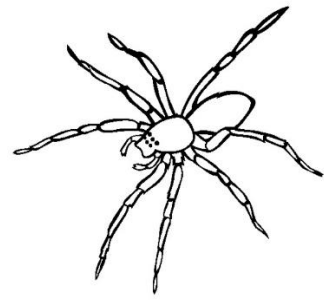




___ RROSOIR



___ RAIGNEE



___ ANC



___ RANCHE



___ ÂTONS



___ AC



___ ASILIC



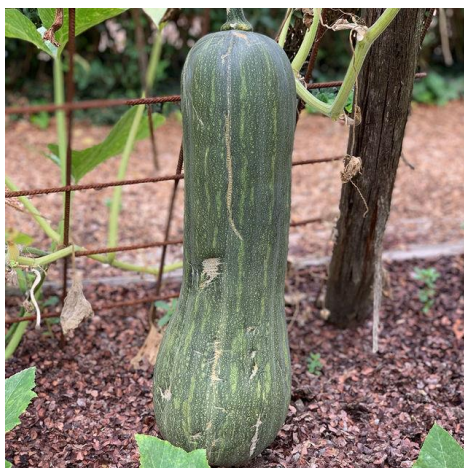
___ OCCINELLE



___ OMPOST



___ OLEOPTERE



___ OURGE



___ ENILLE



___ OMPOST



___ OURGETTE



___ ECHETS



___ CORCE



___ SCARGOT



___ STRAGON



___ PLUCHURES



___ POUVANTAIL



___ EUILLES



___ LEUR



___ OURMI



___ RUIT



___ RAINES



___ ENDARME



___ ELICOPTERE



___ ERISSON



___ ARDIN



___ NSECTES



___ AVANDE



___ AVANDIN



___ IMACE



___ IWI



___ ENTHE



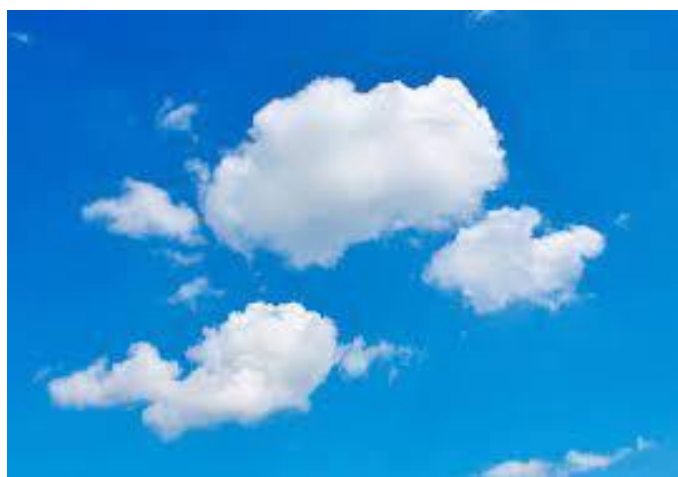
___ ÛRE



___ UR



___ AÏS



___ UAGE



___ ICHOIR



___ ID



___ OISETTIER



___ RTIE



___ ISEAU



___ IGNON



___ RANGER



___ ISSENLIT



___ ETALE



___ OIREAU



___ LUIE



___ UETSCHÉ



___ UATRE SAISONS



___ ATEAU



___ ADIS



Les racines des arbres envahissent facilement un potager à proximité. Photo: Tim Green, Flickr

___ ACINES



___ OMARIN



___ CARABEE



___ EAU



___ AUGE



___ ALADE



___ OMATES



___ ERRE



___ RONC



___ UTEUR



___ IGE



___ UYAU



___ HYM



___ REFLE



___ LMAIRE



___ STENSILES



___ TRICULAIRE



___ ER DE TERRE



___ IGNE



___ IOLETTE



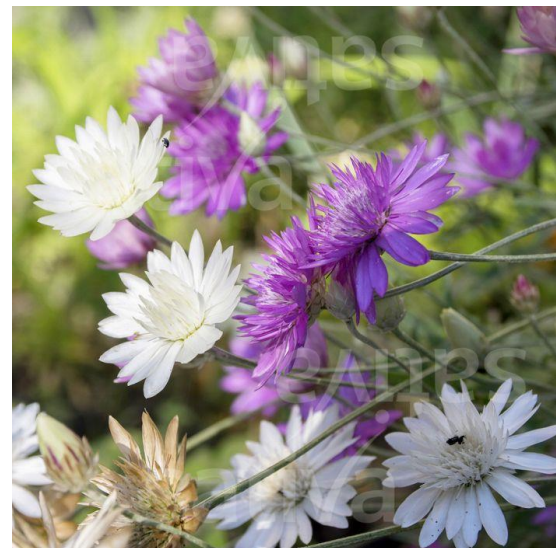
___ ASABI



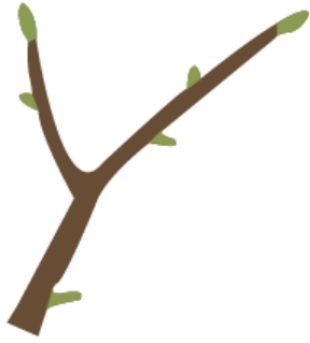
___ EEK-END



___ ANTHIUM



___ ERANTHEME



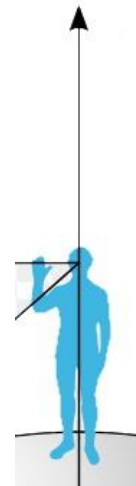
___ EUX



___ AOURT



___ INC



___ ENITH